

# LIBRARY POST PROCESSOR INSTALL

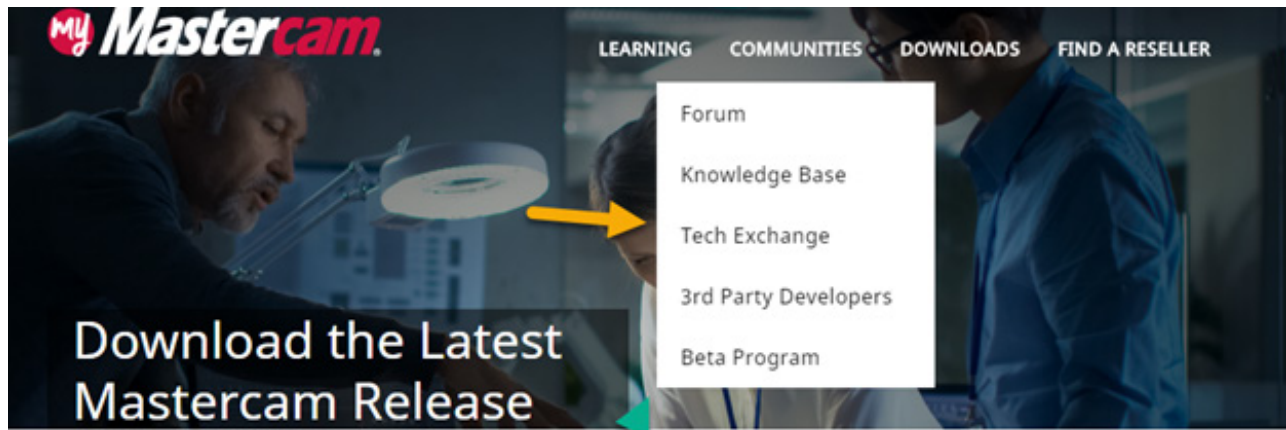


CAD/CAM CONSULTING SERVICES INC.  
SALES • SERVICE • SUPPORT

**Account creation and linking are required to access the Tech Exchange.**

Please visit <https://irp.cdn-website.com/d0d2c2e0/files/uploaded/Mastercam.com-Account-Registration-and-Linking-Instructions.pdf> if you have not completed these steps.

1. Go to [www.mastercam.com](http://www.mastercam.com) Login on the top right corner, your information should already be saved in the window.
2. Select Communities on the top right of the screen then Tech Exchange from the drop down.



3. Once in the Tech Exchange you can search for a specific post processor with keyword or by type from the Product list.

Home

Keyword  
Keyword

Product  
Product

Version

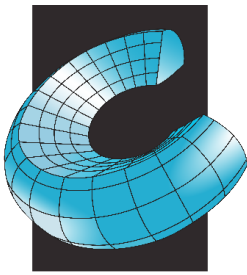
Tags  
Filter by Tag...

☐ Put on Display Posts Only?

SEARCH CLEAR

NEED HELP?

Sample Files Tool Libraries **Posts** Add-ins Mill Turn Environments Component Libraries Setup Sheets




# LIBRARY POST PROCESSOR INSTALL



CAD/CAM CONSULTING SERVICES INC.  
SALES • SERVICE • SUPPORT

4. Once you have found the post you would like to download, click the red bar below the post processor. See below:



Generic Fadal Format\_2 4X Mill.pst

Files included in package:

- GENERIC FADAL FORMAT\_2 4X MILL.MCAM-CONTROL
- GENERIC FADAL FORMAT\_2 4X MILL.MCAM-MMD
- GENERIC FADAL FORMAT\_2 4X MILL MM.MCAM-MMD
- Generic Fadal Format\_2 4X Mill.pst

CNC Post Revision: 25.80

Machine Name: Generic Fadal

Control Name: Fadal (Format 2)

Description: Generic 4 Axis Mill Post

★★★★★

Files available for download:

**GENERIC FADAL FORMAT\_2 4X MILL.MCAM-CONTENT**

5. Double click the mcam-content file. Mastercam (version) will launch and all related post processor file will be automatically saved in the **DEFAULT** location. Default folders listed below for reference.

## Mill Posts

.mcam-mmd and .mcam-control files to C:\Users\Public\Documents\shared Mcam(version)\cnc\_machines>directory.

.pst and .psb files to C:\Users\Public\Documents\shared Mcam(version)\mill\posts> directory.

## Lathe Posts

.mcam-lmd and .mcam-control files to C:\Users\Public\Documents\shared Mcam(version)\cnc\_machines>directory.

.pst and .psb files to C:\Users\Public\Documents\shared Mcam(version)\lathe\posts> directory.

## Router Posts

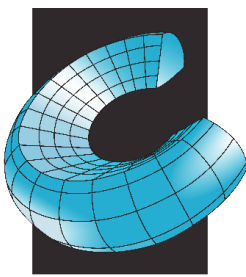
.mcam-rmd and .mcam-control files to C:\Users\Public\Documents\shared Mcam(version)\cnc\_machines>directory.

.pst and .psb files to C:\Users\Public\Documents\shared Mcam(version)\shared\router\posts> directory.

## Wire Posts

.mcam-wmd and .mcam-control files to C:\Users\Public\Documents\shared Mcam(version)\cnc\_machines>directory.

.pst and .psb files to C:\Users\Public\Documents\shared Mcam(version)\shared\wire\posts> directory

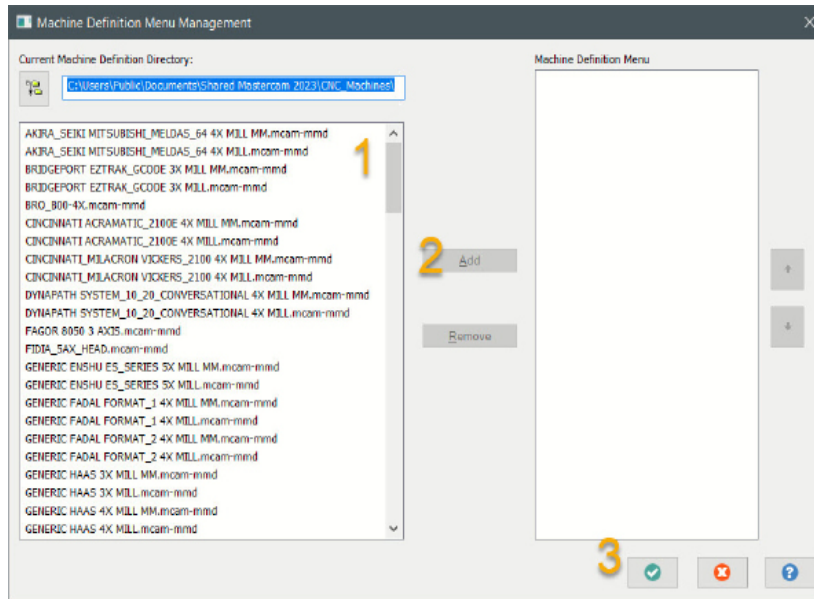


# LIBRARY POST PROCESSOR INSTALL

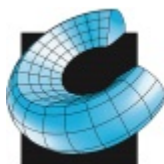


CAD/CAM CONSULTING SERVICES INC.  
SALES • SERVICE • SUPPORT

6. After the post processor is installed you will need to add it to your machine dropdown. Machine> Mill (or Lathe, Wire, Router)> Manage List>Highlight post >Add.



7. Post processor is now available to use.



CAD/CAM CONSULTING SERVICES INC.  
SALES • SERVICE • SUPPORT

## Corporate Office

810 Lawrence Drive, Suite 220  
Newbury Park, CA 91320

805-375-7676

## Orange County Office

2940 E La Cresta Avenue  
Anaheim, CA 92806-1833

714-333-9020

## San Diego Office

11245 W. Bernardo Ct, Suit 100  
San Diego, CA 92127

619-220-2411